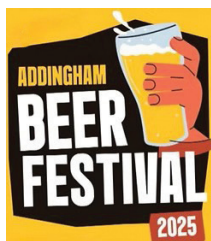


Addingham Village News

SPRING/SUMMER 2026

Your Parish Council
& Civic Society
working together



In this newsletter edition we are celebrating the amazing contribution that two groups make to our village life: The Addingham Beer Festival and The Addingham Environment Group. They and their supporters represent the very best of the values that we share as a community. Please read on for their news.

Richard HunterRowe writes: **It's not just about the beer! The first Addingham Beer Festival was held back in 2011.** Since then, 13 events have been held (two were missed due to Covid). Each event has been a great success, with an average of 700 people attending over the two-

day event, including 50 sponsoring businesses. It has become an unmissable part of the Addingham social calendar!



The Beer Festival Team

Over this time, the festival has raised a staggering £90,000 in aid of good causes, awarding over 250 grants mostly to local groups. Some overseas aid projects have been donated to as well. **Following the success of 2025's festival, we have given funds to 24 different groups and organisations.** Our funds this year were further bolstered by £1,000 from the Totally Addingham Christmas Market raffle and £350

from The Village Quiz. **Inside, recent 2024/2025 beneficiaries share how Beer Fest funds are used. A diverse range as you can see!** No matter the size of the project every £1 is put to good use, matched only by the hard work of all the festival volunteers and supporters involved. Any organisation in our area is welcome to apply for funding. beer@addinghambeerfest.co.uk

Addingham Beer Festival Awards 2025



ADDINGHAM PATIENT PARTICIPATION GROUP (APPG) Thank you for our donation which will support our annual events promoting health issues that affect the village. The monies used for this year's event - The Chain of Survival; How to Save Lives and Use a Defibrillator - will cover hire of the Memorial Hall, the purchase of a promotional banner and the production of posters and go towards refreshments and speakers' expenses.

FAPS Thanks again Beer Fest Team! FAPS is always grateful for your support. This year we are planning to use the money kindly donated to help with our fundraising. We recently discovered our BBQ was broken, so we plan to buy a new one. We use the BBQ several times throughout the year so it's a real essential to help us raise much needed funds for resources and experiences for the children at school.



ADDINGHAM BROWNIES have recently moved to our new home at Memorial Hall. The move comes with an increase in rent and a reduced amount of storage space. Our grant will help cover the extra rent so that we do not need to pass costs onto parents. We

are also investing in storage solutions for our resources and as we'll also have a fully functioning kitchen to use, we are going to invest in some basic cooking utensils to enhance the activities we provide our Brownies!



EASTBURN AMATEUR BOXING CLUB We are a grass-roots, non-for profit, fully affiliated amateur boxing club located in the heart of Steeton. We have been established in the area for over 20 years now. Every penny we make goes straight back into



the club to cover our annual fees and to improve our facilities. We will be using our generous award to put towards new equipment for the gym and for our boxers.



ADDINGHAM GOOD NEIGHBOURS We are very grateful for the continuing support from the Beer Festival as it helped us to organise another highly successful Christmas celebration. This was a great opportunity to meet together and enjoy Prosecco with a cold buffet! We danced to music arranged by Sabine, our Pilates teacher and to finish we sang Christmas carols round the piano. Everyone went home with a cyclamen plant and Christmas card.

Addingham Beer Festival Awards 2025



ADDINGHAM GARDEN FRIENDS (AGF) AGF are delighted to have been awarded an additional grant this year for The Sailor Garden – just up the road from the now renamed pub The Lord Addingham (formerly The Sailor).

Along with other plots around the village The Sailor Garden sits on the site of former cottages demolished sometime in the 1960's. The rear of the plot has a high stone wall from the original cottages and with the mature trees towards that wall it creates a very shady site, with a 'woodland feel'. To further develop this theme AGF plans to remove all existing grass, make a new circular path around the site plus an additional border and new planting. The extended path will have a stone edge with bark used for the path. Planting will be a mix of perennials, bushes and grasses. Subject to agreement from BDMC we propose initial work starting in March/April this year.



REBALANCE CLINIC Claire Hurst is a women's health expert, acupuncturist and breast cancer survivor. Following her own breast cancer diagnosis, she created a free, post-cancer support programme combining gentle group running with acupuncture to support recovery, confidence and wellbeing. Demand for the programme has been high, leading to the expansion to two weekly groups. The grant will fund essential equipment to support safe, inclusive sessions for women at different stages of recovery, while also contributing to ongoing research exploring the role of acupuncture in reducing anxiety, improving sleep and overall health after breast cancer.



ILKLEY GYM CLUB A huge thank you! Our grant allowed us to purchase an iPad for the club. It's been really helpful for both skill analysis, badge work and admin tasks.

YORKSHIRE AIR AMBULANCE Every life we save, every patient we transport, and every emergency we respond to. 81p of every pound you have donated will go towards saving lives. It's all made possible by the incredible support of people like you!



THE CHURCH ORCHARD We hope everyone can experience the orchard's annual cycle of creativity – Winter recuperation, Spring blossom n buds, Summer fruiting and Autumn harvest. It's not just about the fruit! Our generous award will support unique open days and events for our greater

wellbeing, enjoying the natural environment and generally having fun!

Addingham Beer Festival Awards 2025

AAGA The village allotmenters are incredibly grateful for our award. This year's project will help us all within Addingham to learn how best to capture water (though we're all wondering will it ever stop raining?!) for when we experience the inevitable drier months.

CAA HOFFMAN WOOD FIELD We greatly welcome the £500 grant towards the costs of designing a high quality, nature friendly, children's play plan for Hoffman Wood Field. The design process will include consultation workshops involving children and young people, local residents, current users and other interested parties, plus a village wide social media survey



ILKLEY & DISTRICT GOOD NEIGHBOURS

(IDGN) Our generous grant will support our new Addingham Dementia Coffee Morning and our Dementia Café at the Clarke Foley Community Hub. This funding will help us create and continue our welcoming, supportive space for people living with dementia and their carers to connect, share experiences and enjoy time together at Addingham Cricket Club. IDGN provide support to many Addingham residents with Befriending, Shop Assist and our Social Excursions.



ADDINGHAM SENIORS CRAFT

GROUP Many thanks to all those who have helped in many ways to make our group the success it is. Our festival grant will help with a jig saw tool, paint and materials. We look forward to our fifth year of fun, chat and creativity!



ADDINGHAM PRE-SCHOOL Our much-appreciated donation this year will fund a fantastic learning experience for our children - "Incredible Egg Hatching". This spring we are eagerly looking forward to the arrival of our hatching kit and 6 eggs which over the few days it takes the eggs to hatch gives our children an invaluable learning experience resulting, we



hope, in 6 adorable ducklings!



ILKLEY MANORLANDS HOSPICE FUNDRAISERS Your valued donation helps us continue providing expert palliative care and support to patients and their families when it matters most. Such donations ensure we can offer comfort, dignity and compassionate care for people in our community.

Addingham Beer Festival Awards 2025



ADDINGHAM CRICKET CLUB Our award will be put to good use on some upgrades to our kitchen! With a busy sporting calendar as well as other groups using our clubhouse, our kitchen and bar is the centre of good grub and socialising and an important contributor to the club's finances.

ILKLEY GRAMMAR SCHOOL PTA Reader pens enable students with dyslexia to independently take exams without needing an adult reader. The student moves the pen over relevant text and it then shows up on the display and in the earpiece. These pens cost £££. Our grant for a pen makes a considerable difference to our students: greater esteem for pupils and less staff supervision cost. Thankyou!



ADDINGHAM 1ST GUIDES We are deeply grateful for this community spirited award as it helps us empower the next generation of young women to take the lead, with some of the monies going towards a sparkling "Gold" themed celebration for our Guides who have recently achieved their Gold Award. As the highest achievement in Guiding, this award recognizes dedication to new skills, community action and consistent engagement in our

programme. Donations also keep our subscription low, ensuring Guiding remains accessible to every girl in our village. Cheers to everyone - you're helping us build golden memories!

Your Celebrant
Emma

Weddings + Funerals + Namings

“Truly exceptional”
“She made us feel at ease from the very start”

☎ 07718 922715
✉ hello@yourcelebrantemma.co.uk
🌐 www.yourcelebrantemma.co.uk

ALL AROUND CLEANING SERVICES

GUTTER CLEANING SERVICES

Window Cleaning, Gutters, Facias & Soffits, House Cleaning

LOCAL RELIABLE SERVICE
Courtesy text/call pre-visit.

Call Oli on 07739 396 135

Addingham Environment Group (AEG) 2016 - 2026



This year AEG celebrates our 10th anniversary.

We came together in early 2016 full of zeal as a very small group, established under the auspices of the Civic Society. We set out our stall, a “green vision”, to the Civic Society trustees and to Parish councillors, and began work by building an email distribution list of village residents interested in environmental issues.

Our early projects were advocating changes to grass cutting regimes of our roadside verges and green spaces to allow wildflowers to grow and set seed, conducting a questionnaire survey of owners of houses with solar panels, assessing the condition of our becks for fish especially brown trout, raising concerns about plummeting hedgehog numbers and with AEG volunteers, scouts and beavers organising a major clean-up of the village.

We also started monitoring village bird populations.

A major fillip in the early days was our success in winning, via the Yorkshire

Dales Rivers Trust, a £20,000 grant to fund work on the becks, focussing on flood risk and water quality. We called it the 4Becks project, and it was the start of our “Beck Stewards” programme which continues today.

We now have over 400 members, a facebook page with more than 1000 followers, an active and committed volunteer group of almost 100 and a children’s group, the Saplings.



Last year, a typical year, our achievements in numbers included, in no particular order:

- Running 12 pop-up refill stalls in Mt Hermon
- Collecting and analysing water samples from 54 sites along our becks
- Planting 100 trees at Marchup Heights
- Planting 1276 trees and hedge plants at Hardwick House Farm
- Planting 75 trees on the steep slopes down to the river at the back of the Church Hall
- Removing over 100 redundant plastic tree guards
- Managing two community allotments (8b Newtown and 4A Lower Stamp Hill)
- Organising one Jumble Trail with 40 stalls
- Running 11 Saturday morning Saplings sessions for children
- Sorting and cleaning 150 mason bee cocoons
- Commissioning three wildlife greetings cards and one Christmas card
- Collecting over 40 bags of litter from our green spaces by our 6 litter wardens

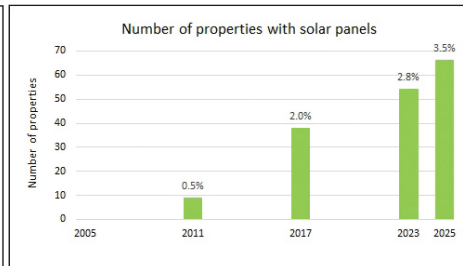
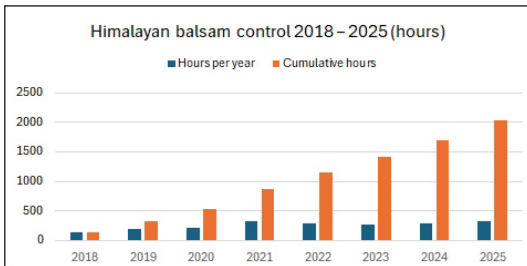
Addingham Environment Group (AEG) 2016 - 2026

- Organising an annual litter pick with cubs and scouts
- Managing ten wildflower mini meadows, around the village and helping with the establishment of two on the Moorside



- Bashing thousands of invasive Himalayan balsam plants over 25 sessions
- Publishing two walks, one a local geology trail by Will Varley and one a Moorside Environment Walk as a contribution to Bradford City of Culture
- Monitoring bee and butterfly populations by walking 10 fixed transects monthly

- Receiving bird records from over 30 residents and walking five monthly bird transects
- Surveying 10 homes for energy efficiency with our thermal imaging camera
- Organising two month-long displays in the Hub
- Setting up a new bat group, and establishing three transects
- Delivering leaflets on “using water wisely” to every 1 of 2000 village homes in July
- Delivering leaflets on “reducing carbon footprints” to every home in September



We and everyone in the village have done and are doing a lot, and the village is on the move, but is it enough? Is it fast enough? **The answer is mixed.**

Sadly, our carbon footprints remain stubbornly high and are not any different from the national average, our household waste recycling rates don't seem to be improving, most of our invasive species are here to stay, and our becks are still as polluted as they were ten years ago!

On the upside, water quality in the Wharfe should improve following Yorkshire Water's major investment in sewage treatment infrastructure at Low Mill, the spread of invasive

Addingham Environment Group (AEG) 2016 - 2026

Himalayan balsam in the village is under control, residents are fully committed to recycling household waste and to the general principle of recycling, **many wildflower mini-meadows** attractive to pollinators have been created and the numbers of **electric vehicles and solar panel installations are steadily increasing**.

There is also much more awareness amongst the wider public about what needs to be done and how to do it.

So as we look forwards to the next ten years we, as AEG, will continue our work with our wonderful volunteers and will continue through our Climate Action Addingham (CAA) partnership with The Parish Council, doing our best working with the whole village (residents, community groups, and businesses) to move towards a greener future.

Rick Battarbee and Jan Hindle



Join us! There is no Planet B



CLAIRE WHITHAM
HAIR EXTENSIONS

HAIR EXTENSIONS

HAIR LOSS SOLUTIONS

HAIR COLOUR

HAIR CUTTING

140 MAIN STREET
ADDINGHAM
LS29 0LY
TEL: 01943 969958

Fusion Chocolates
Luxury Award winning Chocolatier

Chocolates
Handmade in Addingham

Available for Chocolate Parties & Workshops



www.fusionchocolate.co.uk

 40 Leeds Road, Ilkley

Follow me
  @fusionchocolateuk

John Whitham
Independent Family Funeral Services

Tel: 01943 831375



**34 Leeds Road
ILKLEY
LS29 8DS**

email: j.whitham@btinternet.com
www.johnwhitham.co.uk

Pre-payment funeral plans

Golden Charter Funeral Plans 



In association with Jacksons Funeral Services

Civic Society News



Hello All, Gill here! In this issue I'm going to tell you about one of our current projects. With regular meetings of our trustees and of our various groups you would be right to think there must be a lot of minute/

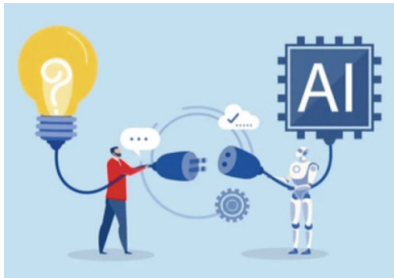
note taking! So, to help us we've started using AI. So far it's a real game-changer, by using AI-powered tools to transcribe and summarise our discussions we save lots of time and resources while ensuring that our records are accurate and up-to-date.

However, as with any new technology there are pros and cons to consider. With regard to sensitive information and privacy we have reviewed and feel confident of the protocols for the storage and deletion of data, and when we use AI as a search facility we are alert to copyright and plagiarism issues.

On the positive side, AI has the potential to optimise energy consumption and reduce waste but much research needs carrying out to reduce the negative aspects of AI. If not

managed properly, the production and disposal of AI hardware can contribute to the depletion of natural resources, electronic waste and environmental pollution.

Furthermore, the energy consumption of AI systems, particularly large-scale data centres could potentially lead to higher carbon emissions and the use of water is a significant concern prompting much discussion and research.



So far so good, but we will remain vigilant! Enough of AI for now; as ever we have lots of events throughout the year, just turn to the back of this newsletter for our dates and contact details. **Do enjoy the news from our ever active village groups and societies and send us feedback, especially if there's anything you'd like featured next time!**

All best wishes

Gill Battarbee, Chair, Addingham Civic Society

Contact details page 31

Can Do Tuition

Qualified teacher in Addingham, providing tuition for 11+ High School Entrance Exams and all levels and abilities in Mathematics (from KS1 to GCSE Higher). Adults and students with Special Educational Needs/ Disabilities welcome. Daytime and evening sessions available. Contact Tracey, on 07816 433 851 or email candotuition@gmail.com



FUZZY'S
Hair & Nail Salon

tel: 01943 830611

2a Bolton Road, Addingham, LS29 0NR

little blossoms

Under 4s Softplay Hire

Monday Playgroup in Addingham
Children's Christenings & Parties
at St Peters Church Hall
littleblossomsoftplay@gmail.com
07837178094 FB/INSTA

Peter Barton

Luthier

36 Main Street, Addingham. LS29 0PL

Tel +44(0)1943 830447

www.peterbartonguitars.co.uk

Email: pete@peterbartonguitars.co.uk

Maker of Fine Classical and Acoustic Guitars
Repairs and Restorations



ACS Heritage Group



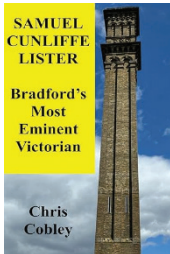
Chair of the Group, Ian Cameron, writes We continue to promote the heritage of our village. Thanks to the efforts of Don Barrett from the 1990's to today, we are fortunate to have the Addingham Photo Archive that is free, and easy for everyone to use. We now have listed every street in the village and are proud to continue improving the archive.



Here we can see the changes over time. For example, here is 25-29 Church Street. At one end is the former King's Arms, linked to the attack on Low Mill as part of the 1826 Yorkshire Weaver Riots. In the 1980's it

hosted Hair Design, followed by Provisions, then a Country Cookery shop and now it's a home. At the other end we have a barn that was used for battery hens, unfortunately blown down in the early 2000's and now also replaced with a house.

Our latest publication is Samuel Cunliffe Lister: Bradford's Most Eminent Victorian, by



Chris Cobley. A remarkable story of achievements and challenges.

Notwithstanding the iconic Manningham Mills, he also created Cartwright Hall and Lister Park, recent host of the Turner Prize. But Lister Park has other tales to tell. Did you know that in 1904 Lister Park held an industrial fair that drew more than two million visitors and included a Somali village?

We've some fascinating talks coming up this year so see our website for details. In October, for example, we're delighted that Professor Chris Gaffney from the University of Bradford will share findings of that 1904

exhibition from his recent archaeology dig in Lister Park.

To see images of our village and community go to the Addingham Photo Archive (<https://photoarchive.addingham.info>). Please do have a look, feedback is always welcome.

Publications can be purchased from The Hub or www.addinghamcivicsociety.org.uk.

ADDINGHAM VILLAGE SOCIAL CLUB LTD
01943 830507

SKY SPORT BY SPORT AT THE RACES

New Members welcome

COMPETITION STANDARD SNOOKER TABLE

www.addinghamvillagesocialclub.com

HIRE 12-75 SEATER

GREAT TOURS OF UK AND EUROPE

STEELES COACHES
61 MAIN ST ADDINGHAM
01943 830206
info@steelscoaches.co.uk

AVAILABLE FOR PRIVATE HIRE

News from St. Peter's



Welcome
to our new
coordinator for
*Children, Teens
& Families*

Bethany Harrison

Bethany writes:

I live in the village with my husband and our 3 children. Our youngest has a very rare genetic disorder and complex needs, and we've faced some challenging conversations about his future. We're incredibly grateful for the support of Martin House Children's Hospice, and my faith has been a constant source of strength. Quite

simply, my life would be a whole lot harder without Jesus in it .

In my role, my goal is simple: to open the doors of church to children, teens, and families, helping them discover the good news of Jesus and live it out together in our local community. I hope to bring warmth, friendship, smiles, and fun. Do say hello when you see me out in the village or better still, pop down to St Peter's on a Sunday morning and bring the whole family along. We'd love to welcome you

07803 175080 bethanyharrison.stpeters@gmail.com

Bethany

Upcoming dates for monthly Messy Church are Sundays at 4pm
10th May, 14th June, 12th July. Drop in and see for yourself!

Easter

there's a *Messy Church* for
Easter on Good Friday
3rd April at 10am,
and on Easter Sunday
5th April at 10am
we'll be celebrating the
happiness of Easter together
as a church family – come and
join in!



details of all Holy Week & Easter services at St. Peter's are on our website



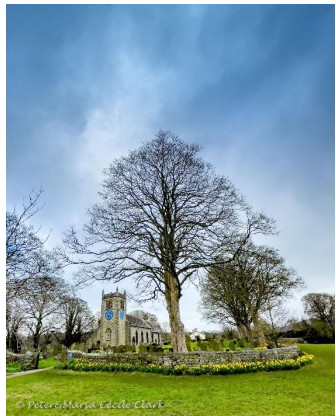
*St. Peter's has joined the
Pilgrim Places network
– find out more here* →



Revd. Mark Cannon writes :

Look out for the new plans for making alterations to our church building. We will soon be starting a public notice period on this for the village, and we welcome your comments; we'd be glad of your help to make our church building more open, more welcoming, and more accessible.

Mark



© Peter and Cecile Clark

Thanks to Peter and Cecile Clark for photo

Get the latest news at stpetersaddingham.org.uk
or on **St. Peter's Facebook** page
or on our **C.A.F.E Facebook** page
or contact@stpetersaddingham.org.uk 01943 830306

Addingham Allotments & Gardens Association (AAGA)



Stewart Taylor writes *When is it really, truly Spring?* Never mind all the weather reports and forecasts, Spring comes on that magical day when you step outside into air and light that is somehow different, when that noise you hear is, yes, a bird chirping in its nest, and that those little green shoots pushing through will grow into the spring flowers you planted back in autumn. So the answer is...when **you say** it's Spring, **it's Spring!**

The Allotments & Gardens Association has emerged from a short winter hibernation and is back in full swing. Our 2026 programme is already underway and this year as always we have a wide range of events including our Spring and Annual Shows, Plant Sale in May, Pumpkinfest, monthly speaker meetings and a members outing during the summer.

We're proud to have grown our membership to over 100 in the past three years so how about adding to that number by joining in, we're a friendly bunch! Our aim for our association is to be inclusive right across the gardening spectrum. So whether you have a garden or allotment, a few pot plants or a couple of window boxes, or maybe none of these but just a passion for gardening and the environment you will be most welcome.

Just £12 a year for family membership with benefits including free entry to all our talks and events, a monthly members draw, 50% discount on entry to all RHS gardens, groups for sharing tips & ideas and the opportunity to meet, mix and socialise with like-minded folk. All the joining details and how to ask us any questions can be found on p31.

Check out our website for our full programme of events!

--Spring Show Sat April 11--Plant Swop n Sale Sat. May 9--

AN EXAMPLE OF THE CALIBRE OF JUST ONE OF OUR UPCOMING SPEAKERS

We're looking forward to welcoming Joe Lofthouse on Thurs 30th April. An award-winning horticulturalist and the Edibles & Nursery Team Leader at RHS Harlow Carr Joe will focus on practical, timely tasks for the home gardener and it promises to be a most informative and entertaining evening.

Non- members welcome for just £2 but why not join and hear Joe for free?!



ADDINGHAM PRE SCHOOL

Based at Addingham Primary School, Bolton Road, Addingham

Early Years Care and Education
for Children from 2 years ahead of starting school

Open 8am-4.30pm, Mon-Fri (term time only)

Nursery Grant for 2, 3 & 4 year olds
and Fee Paying Places Available

Ofsted inspection Dec 2025 graded **STRONG PROVIDER.**

Contact for more information 01943 830450

Email: info@addinghampreschool.org
Visit our website: www.addinghampreschool.com
 Addingham Pre-School



**Hadfield
Photocraft**
printing services

Printing & Copying Service

CALL Peter on 01943 831525
124 Main Street • Addingham
info@hadfieldphotocraft.co.uk
www.hadfieldphotocraft.co.uk

Patient Participation Group Event

Addingham Patient Participation Group Event

**“Chain of Survival:
How to Save Lives and Use of Defibrillators”**

Come and discover vital information in a highly informative session.
All are welcome and admission is free!

Tuesday 16th June 2026 at 7pm

Addingham Memorial Hall

Refreshments served from 6.30pm



Presented by Emma Turner
Community First Responder &
Paramedic with The Yorkshire
Ambulance Service
Assisted by Alan Davies
Retired Community First Responder



Could you recognize and deal with a life-threatening emergency, such as:

- Unconsciousness
- Asphyxia
- Asthma Attack
- Angina Attack
- Heart Attack
- Stroke
- Cardiac Arrest
- Use of AED (Automated External Defibrillator)
- Arterial Bleed
- Choking



Supplier and installer of high quality windows and doors including:

- Bi fold doors
- Composite doors
- Timber windows and doors
- Aluminium windows and doors
- uPVC windows and doors

Visit our new showroom and get inspired...

Addingham Memorial Hall
151 Main Street,
Addingham, LS29 0PD
01943 830 379
www.dgl-ilkley.co.uk

For a no obligation quotation please call us on 01943 830 379 or send an email to dglilkley@outlook.com

ADDINGHAM MEDICAL CENTRE



We are a small and friendly GP surgery, offering excellent patient-centred healthcare. We welcome new patients living within our catchment area.

Please contact reception for an information pack.

T: 01943 830367

www.addinghamsurgery.co.uk



PLAN-IT-EARTH

TILE SHOWROOM

Main Street, Addingham LS29 0PD

- Ceramics
- Porcelain
- Glass
- Mosaic
- Handmade
- Natural Stone

Design, style, and prices tailored to individual needs.

For more information visit our showroom or contact us on

01943 831 300

www.plan-it-earth.co.uk

Addingham Methodist Church

Dear Friends, we are progressing with the sale of our Church premises. In the absence of bids to purchase the premises for Community Use other bids are being sought from several interested parties. Meanwhile we are now part of a newly formed Multisite Methodist Church comprising the congregations of Addingham, Ben Rhydding and Burley in Wharfedale, and known as Ilkley Moor Methodist Church. Rev Shannon Delaureal continues as our minister and is supported by local preachers and local worship leaders. **We continue in Addingham as an active, worshipping congregation every Sunday (5th Sundays elsewhere) and host numerous activities as we explore our evolving presence and future in the village. Addingham Friendship Club (Wednesday Club as was) meet October to May, 1st & 3rd Mondays, 2 – 4 pm in St Peter’s Hall. The current all ladies membership say men are welcome to attend too! We recently held our popular Pancake Coffee Morning in the Memorial Hall.** This annual event is a major fundraiser for the club, and this year we raised £915 for WhiteKnights, also known as ‘Yorkshire Blood Bikes’, a charity that supports the NHS by delivering blood, plasma, tissue samples and breast milk between hospitals in Yorkshire.

Soulful Walking is a new initiative, when Rev Shannon leads a gently paced 3 – 5 km walk around Addingham with pauses to reflect upon aspects of nature, what awakens our souls, and how we can connect our faith or spirituality through our experiences in nature. Ending at The Hub with refreshments and conversation. **Meet 14.30 at Hen Pen Sunday 22 March and 19 April.**

Good Friday 3rd April 11am Sugar Hill Addingham Churches Together - the Act of Witness Good Friday 3rd April 7pm a contemplative service led by Rev Shannon with the church’s singing group. Easter Sunday 5th April 10.30am led by Rev Alistair Newton, morning service with Holy Communion.

‘Our home in Addingham may be changing ... but our presence remains’.

For any help please do contact Rev Shannon. Details on page 31.

Geraldine Thompson Artist

2 Chapel Street
Addingham LS29 0PG
07719 747523

www.geraldinthompsonart.com

gthompsonart@btinternet.com

[@geraldine_thompson_art](https://www.instagram.com/geraldine_thompson_art)

Paintings. Open Days. Courses

Lucy Hartley Accountancy



- Accountancy for sole trader and limited companies
- Taxation
- VAT
- Payroll
- Bookkeeping

07754 949881

lucy@lucyhartleyaccountancy.co.uk
lucyhartleyaccountancy.co.uk

Village Chippy

Pop up fish and chip van

Visiting Addingham every other Thursday,

Memorial Hall Car park

Open 4.30pm until 7.00pm

E: ajpvillagechippy@gmail.com

W: www.thevillagechippy.net

STEWART STEAD PAINTER AND DECORATOR INTERIOR & EXTERIOR



CITY & GUILDS QUALIFIED
FREE ESTIMATES

4 ST JOHNS AVENUE
ADDINGHAM LS29 0QB

01943 839759
07742 228335

S.STEAD121@BTINTERNET.COM

Climate Action Addingham (CAA)



As we begin another year we look forward to working together with all residents, community groups and businesses in the village to do our bit to tackle the global problems of climate change and biodiversity loss. These

issues have now become “crises” as national and international efforts to control them are not measuring up to the scale of the problems.

What can we do locally? Our aim is to find practical ways here in Addingham to live more environmentally sustainable lives by **reducing our carbon footprint, minimising waste, protecting nature and using water carefully.** We will be promoting these key themes and ideas to put into practise through upcoming events and supporting environmental projects in the village. **Here is our CAA projects update. For more info please see www.climateactionaddingham.info.**

- **WHARFEDALE GREENWAY**

Councillors from both Addingham and Ilkley have now walked the proposed route along the Dalesway together and have reported that all landowners, except one, along the route are in favour. The project also has the support of the West Yorkshire Combined Authority and a business case to advance the footpath upgrade to bridleway status is expected later this year.

- **MILL STREAM AND YORKSHIRE WATER’S SEWAGE PUMPING STATION AT LOW MILL**

Yorkshire Water’s work to build new larger stormwater tanks at Low Mill is on schedule for completion by March 31st this year. Although the position of the overflow outfall into Mill Stream will not be changed YW are committed to removing the sludge that has accumulated along the bed of the stream over the last few decades. We are hoping that this will lead to an ecological restoration of the channel.

- **RAINWATER HARVESTING**



Following the intense summer droughts we have experienced in recent years we are strongly supporting the AAGA’s initiative to source 1000 litre water bowsers and install them on the Lower Stamp Hill allotment, allowing them to be filled by rainwater runoff from the roof of the PC container now on site. We are planning a launch event in the summer. Using this as an example we will then be encouraging all householders in the village to harvest rainwater in water butts for use on window boxes, outdoor pot plants and gardens instead of using tap water.

- **OLD FIRST SCHOOL SITE**

There has been little progress on this project. We believe it is Bradford Council’s intention to sell part of the site for housing and have been advised to monitor the Pugh Property Auction website to check when or whether the site appears as a lot on the list for sale.

Climate Action Addingham (CAA)

• HOFFMAN WOOD FIELD

At their meeting in November 2025 the Parish Council fully supported a proposal to develop Hoffman Wood Field for nature-friendly children's play. Councillors were impressed by the design ideas presented at the meeting by Yorkshire Dales Millennium Trust (YDMT) landscape architects.

Funding will be a two-step process, with approximately £5,000 needed to fund the creation of a design by YDMT, and then a much larger figure to fund the implementation of the plan, assuming there is a consensus within the village to proceed. This initial design stage includes detailed site mapping, consultation meetings with village groups (especially youth groups and local residents) and the production of a detailed implementation plan with costs.



The Parish Council is taking the lead, and fund raising for this first step is already underway with £1500 (including £500 from the Beer Festival) pledged so far. We are hoping that the remaining funds can be raised over the next few months so that YDMT will be able to start work in spring this year!

• THE CHURCH ORCHARD

A group of church orchard 'friends' is building a plan to manage the fruit trees & plantings within the orchard space, a wonderful site created and so ably managed by the late Derek and Ann Law. It is hoped, as the space becomes more open to the public through the year, to showcase environmental projects alongside community events.

• COMMUNITY ENERGY

AEG's zero carbon lead, Peter Haigh, is reviewing our work in the village on home energy efficiency and solar panel installation. He is seeking to build on these initiatives with a view to developing a community solar project and an outreach project that helps residents make cost-effective decisions in choosing energy suppliers and supply contracts. We will be making his report available on our website in due course.



**To get involved contact Rick Battarbee on aeg@addingham.info or Lucy Steer clerk@addingham-pc.gov.uk.
REMEMBER, THERE'S NO PLANET B!**

Butterfly



Butterfly No.42

One of the most spectacular artworks created for BD25 City of Culture was the installation 99 Butterflies by artist Meherunnisa Asad with Studio Lél for the “Wild Uplands” landscape of Penistone Country Park near Haworth. The individual stone artworks are made of intricately hand carved pieces of pink and purple stone in the shape of butterfly wings.

When this event finished in October 2025, **community groups across the Bradford district were invited to ‘rehome’ the butterflies. AEG’s bid to bring one to Addingham was successful!** After consultation with both Addingham Parish Council and Bradford Council, it has now been installed in the Old Station Way wildflower meadow in the centre of the village.

Rick Battarbee, AEG chair, said: “The Old Station Way meadow is the perfect site to show off the butterfly as it can be seen and enjoyed by everyone, and it represents the progress we’ve made over the last ten years, not just at this site but also across the village, working with our volunteers to increase wildflower abundance and diversity and attract pollinating insects, especially bees and butterflies.” If anyone knows of the whereabouts of other ‘rehomed’ butterflies in the district AEG would like to hear from them to discuss the possibility of making twinning arrangements or even the creation of a butterfly trail. **Improving habitat connectivity in the face of climate change is a central theme in wildlife ecology.**

99 Butterflies was inspired by Palestinian poet Mahmoud Darwish’s haunting question: “Where will we go after the last frontiers? Where will the birds fly after the last sky?” Exploring displacement, sanctuary and longing, it was the work of Studio Lél, founded in Peshawar, Pakistan by Farhana Asad and now led by her daughter, Meherunnisa Asad.

Thank you to Ilkley Gazette for their text and covering our story!

Muirhead Dental Health

103, Main Street, Addingham LS29 0PD

01943 830079

www.addinghamdentist.co.uk

Ask about our same day crowns and veneers using CEREC (no impressions required)



Dental Health: Gum Health: Dental Implants: Clear Braces

Balloon
WORLD

Maz & Jess
07711 529945
info@balloon-world.co.uk
@BalloonWorld1 on Facebook & Instagram

Bradford 2025 City of Culture

Throughout 2025, Addingham participated in **Bradford 2025 City of Culture** celebrations through a series of diverse, community-led events that highlighted the village's heritage, culture, environment, and local talent.



MAY The festivities officially commenced on May 11th with the Civic Society's new **Addingham Heritage Walk**. Designed and organised by members Rob Smith and Paul Harris, this inaugural village event took advantage of a beautiful sunny day to showcase the village's historic blue plaques.

JUNE Environmental heritage took centre stage with the launch of the



Addingham Moorside
Connections
Walk



Addingham Moorside Connections Walk. Created specifically for BD25 by our Environment Group, this self-guided trail explores how geology and past human activities—such as textiles and mineral extraction—have shaped the local landscape and wildlife habitats. The walk was a featured part of **Climate Action Addingham Wildlife Week**, which also included bat seeking and “balsam bashing” activities.



In aid of Sue Ryder Manorlands Hospice
Addingham Open Gardens 2025: Gallery



JUNE BD2025 Addingham Open Gardens Weekend

featuring art exhibitions and music in the gardens was a resounding success, raising over £9,100 for Sue Ryder Manorlands Hospice. The event was run by the Addingham Allotments and Gardens Association and featured more than 20 private gardens, allotments and public spaces. As part of this event the village created a unique musical landmark and legacy: **Orchard Music: The Addingham Lithophone**. This instrument, featuring tuned stone bars is played similarly to a xylophone. Spearheaded by Bobbie Miller, fashioned within a custom made wooden frame made by Peter Kovaks and installed by Martin Ellis the instrument is located in The Church Orchard, St. Peter's. The Year of Culture was further celebrated with specialised children's activities held in the wildflower meadow on Old Station Way.



JULY The spirit of unity was further emphasized on Saturday, July 5th, when the village hosted a procession for the BD25 **City of Culture Baton**. This yellow-clad procession moved along Main Street as a symbol of bringing communities together.



Bradford 2025 City of Culture



The batons were a collaborative work created by students of Calton Bolling School. (Picture courtesy of David Boyle). **Addingham Ceilidh Club** celebrated City of Culture here in the village with a day of dance on July 20th, featuring dance across many cultures and rounding off the day with a lively ceilidh.

“how do you create a design in silver?”

DON PORRITT



SEPTEMBER 19TH

7.30 pm

Free Admission

ADDINGHAM MEMORIAL HALL

SEPTEMBER We celebrated master craftsmanship with a presentation by **Don Porritt, internationally renowned silversmith and village resident**. Held at Memorial Hall, Don provided a fascinating look at the skill and imagination behind his work, sharing the stories of prestigious commissions such as a Lloyds TV BAFTA and the AXA Cricket award.

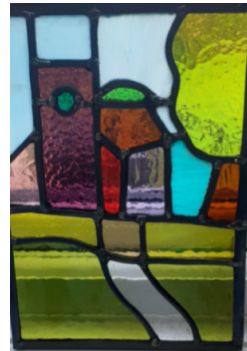
NOVEMBER “Share your Skills” a photo exhibition organised by John Fontana concluded our year-long celebrations. Throughout **November and December**, a continuous loop of photographs was displayed on the Hub TV screen. 130+ images were submitted by residents illustrating their wide range of skills and interests, including painting, pottery, silversmithing, knitting, sewing, baking, woodwork, glasswork, sports and many others.

woodwork, glasswork, sports and many others.

A truly befitting ending to BD25 City of Culture and one to share with future generations.



French polishing the guitar - Peter Barton



Pete Bendall - St Peter's Church - stained glass



And the legacy lives on...!

Yorkshire Water - Addingham Update



YorkshireWater

Yorkshire Water's work at Addingham sewage pumping station (SPS) and Low Mill Lane combined storm overflow (CSO) is progressing well.

The **£9.7m project** is part of the utility company's £1.5bn investment to reduce discharges from storm overflows across Yorkshire by 2030. The work in Addingham will help to improve water quality in the river Wharfe. The company is reducing discharges from each storm overflow within 5km upstream of the bathing water site in Ilkley to one discharge into the river Wharfe per bathing water season (May-September) and no more than ten discharges per year on average – ahead of the Government's 2035 target. **The work will see increased capacity within the sewer network via a 3,900m³ underground storage tank**, which will be capable of holding 3.9 million litres of storm water during heavy or prolonged rainfall events – that's enough to fill around 32,500 bathtubs! The stormwater will then be returned to the usual sewer network for full treatment, helping to improve river water quality.

A planning application has now been entered for three small elements of the scheme, at the CSO site: (i) A new 2.4m high vent stack for the underground storage tanks (ii) 2.4m high boundary security fencing and gate around the new works (iii) An extension to the existing Yorkshire Water access road to allow vehicles to reach the new storage tanks.

These new additions from this planning application will be built after the main construction works, which is expected to finish in early spring 2026, and will be designed to minimise visual impact. **Subject to planning approval, this final stage of work will take place between April and summer 2026.** The work in the area is important to protect the environment, and the additional elements will ensure the site can operate correctly. Yorkshire Water thanks all residents in Addingham and the surrounding area for their patience while these works are taking place.

The £9.7m investment at Addingham follows:

- £60m upgrade to Ilkley wastewater treatment works, which is currently underway
- A new £15m sewer under the A65 to reduce discharges to the Wharfe
- An extension of the tunnel to reduce Rivadale storm overflow discharges to 1 per year per bathing water season in 2026, alongside upgrades to Rivadale CSO, Ilkley
- The addition of UV irradiation treatment at the Draughton, Grassington and Beamsley wastewater treatment works to improve water quality
- A £1.4m investment at Ben Rhydding wastewater treatment works and Wyvil Crescent, Ilkley storm overflow to further reduce discharges to the Wharfe
- Further investment at Bridge Lane storm overflow and Ilkley Middleton sewage pumping station, all of which are also expected to be completed in 2026.

M Group's normal working hours at the site are 8am-5pm. The contractor is working hard to meet the compliance date for this project, so they may be working longer hours until the end of March on some days, to make sure the work is finished. Yorkshire Water say representatives will speak with those most affected by extended working hours, which could include nighttime and weekend working.

Community News



Bradford District Care
NHS Foundation Trust



Addingham Riverside Walking Group

We meet **every Tuesday 10-11.30am**
at the **Addingham War Memorial** (next to the Memorial Hall / Medical Centre)

Join us for a 1-2 mile flat gentle stroll, usually through the historic village and along the paths by the River Wharfe, spotting a variety of wildlife including kingfishers

More info: 01274 259190

WellTogetherBDCFT

welltogether@bdct.nhs.uk

better lives, together



Town Head Garage

Addingham

- MOT's • Servicing • Tyres
- Exhausts • Air-conditioning
- Batteries • Diagnostics

Town Head Trading Estate
info@townheadgarage.co.uk
Emma, Syd and team 01943 839763

Period Holiday Cottages Addingham

- Most loved homes on Airbnb
- Dog Friendly
- Hot Tub & Luxury Hampers
- Available for short term rental - fully furnished, all bills included
- George St & The Rookery

Lorraine & Hayley - 07809681373

addingham_cottages



01943 831166


sales@theplasticball.co.uk

70 Main Street, Addingham, LS29 0PL

Community News

The Priority Services Register (PSR) is a free UK wide initiative providing advice and support in relation to your utilities, including most importantly when there's an interruption to your electricity, gas or water supply.

Energy and Water suppliers will offer bills in different formats and languages, provide support with payment issues and offer additional support in relation to your energy bill if you have mobility, sight or hearing needs. Energy Distributors/Networks (who own the wires and pipes!) provide the support when there's a power cut or gas interruption. For severe outages they will establish warm hubs, provide heat packs, cooking facilities and emergency generators. And when doing maintenance nearby, they will offer extra support to keep everyone safe.

the PSR  **It's easy to get registered** if you, or a relative, friend or neighbour are eligible and there's information you can access easily to take the next steps. A website run by the Energy Distributors and Networks is a good place to start: **ONLINE** www.thepsr.co.uk

This website provides information on the benefits of registering and household eligibility (examples incl: pensionable age, chronic illness, use 'red button' service, rely upon medical equipment using electric or water, vulnerable family members at home, children under 5).

Just insert your postcode to determine local providers. For our Addingham postcodes: the weblink routes through to Northern Powergrid. There's a simple sign up 'tell us once' template that then shares your details across both suppliers and networks. **Or you can PHONE Northern Powergrid to register on 0800 1692996** (*editor's note: I rang this month and the call handler was exceptionally helpful*)

EXTRA HELP If you'd like some extra help registering or need more advice on social support or financial benefits you can always pop into The Hub and Wendy or Lucy will point you to help available locally including village contacts like Addingham Good Neighbours. Ilkley Good Neighbours at Ilkley Clarke Foley also provide a drop in service.

WATER
0345 1 24 24 24
report a problem
www.yorkshirewater.com

**TRACK OR REPORT A
POWERCUT ONLINE**
www.northernpowergrid.com/power-cuts

Emergency Contact
POWER CUT?
CALL 105



**Smell gas or
suspect carbon
monoxide**
Call 0800 111 999



Sue Ross Art Class
Methodist Church Hall (Chapel St)
Wednesday 1.30pm-3.30pm ('til June)
Ring for details: 07962 187533
Email: susanroxanne@hotmail.com



Award winning Yorkshire produce
for business and personal gifting
07837178094
greatyorkshirehampers.co.uk

Join the Fun at
Addingham BROWNIES

For girls aged 7-10
Mondays 5:15pm - 6:45pm
Addingham Memorial Hall

girlguiding

Email: addinghambrownies@gmail.com

home instead.

Join us at our monthly
Community Companionship Café

Join us every second Monday of the month
 from 2pm - 4pm
 at Addingham Memorial Hall, Main Street,
 Addingham, LS29 0PD

Fun, friendship and good company £5 entry
Open to the whole community

- ☕ Refreshments
- 📄 Quiz & Raffle with prizes
- 🎤 Live Entertainment

Upcoming dates:
 09/03/26
 13/04/26
 11/05/26

Easter Raffle
 in aid of
JOANNA'S JOURNEY

Raffle Tickets £1 Available from Addingham Village Social Club
 Raffle Drawn at AVSC on **Friday 3rd April**

Scan to read Joanna's story. Please share!

Scan to visit Joanna's Just Giving page

MEMORY COFFEE MORNING

11am - 12.30pm
2nd & 4th Thursday of the month
@ Addingham Cricket Club

Are you or someone you love affected by dementia and live in Addingham? We warmly invite those living with dementia and their carers and/or loved ones to our twice monthly coffee morning. **Held on 2nd and 4th Thursday of the month.** Please contact Helen on 07592 307263 to confirm your place or just come along. We look forward to welcoming you.

Ilkley and District Good Neighbours is a Charitable company limited by Guarantee. Registered in England & Wales No. 6802173. Registered Office: Riddings Hall, Riddings Road, Ilkley LS29 9LU. Registered Charity No. 1126267

Addingham Memorial Pavillion and Bowling Green

'For the good of the people'

Joe Ginty writes: On November 18th 1918, one week after the Armistice, the Parish Council, having unanimously

approved the concept of a 'Memorial Close' proposed by Cllr. Foster Wall, accepted the kind offer of Mr George William Douglas of Farfield Hall to negotiate with Lord Masham (John Cunliffe Lister) as to securing the 5 acre field he owned as a gift to the village for a Recreation Ground and a Memorial to those who had given their lives in the war. Lord Masham's Field was situated to the east of the then Primitive Methodist Chapel in Main Street.

Lord Masham approved of the ambition and vision of the Parish Council and kindly gifted the land to the village. On February 10th 1919 a Memorial sub-committee was formed to oversee the development and Mr John Proctor, Architect, was asked to prepare plans for the recreation ground and memorial. Mr G W Douglas kindly offset the costs of drawing up the plans which were viewed on 16th June 1919 and later accepted with an estimated building cost of £2,000 (£90,000 at today's value) which was to be paid for by contributions and increasing the village rates by 3d in the pound.

Work began in August 1919. The Pavilion was constructed in keeping with other buildings in the village using dressed Yorkshire stone with a flagstone roof. The north side of the Pavilion would form the War Memorial and the south side would be a Club House with veranda facing a Crown Bowling Green.

By the late 19th Century the game of Crown Green Bowls had become popular amongst the working class communities of the Yorkshire and Lancashire industrial mill towns with Greens often laid in public parks or alongside a local pub. The Parish Council saw the value of providing a safe area for relaxation and physical pastimes in the fresh air away from the noise and drudgery of the textile mills. The Memorial Green would stimulate physical activity and community identity. The game was accessible to all in so far as 'woods' were relatively inexpensive and players would pay only a nominal fee to use the green.

In April 1920 the field gifted by Lord Masham was formally conveyed to the Parish Council, overseen by Mr M R Knowles, Solicitor. Henceforth, Memorial Close would be retained in the land registry on behalf of Addingham Parish Council as Freehold to be owned and administered by them. This remains the case today.

Both the Pavilion and Bowling Green were opened on the evening of Monday 5th July 1920. There was a large attendance, and it took the form of an exhibition of bowling. During the evening many spectators were invited to bowl and comments were made on the good condition of the Green. Mr John Bishop was first to suggest the formation of a Bowling Club based at the Pavilion and the first mention of a match on the Bowling Green was on Saturday 11th June 1921 between teams representing Addingham and Harewood with Addingham being the victors. The first AGM of Addingham Bowling Club was held on 21st October 1921. President was Mr Bishop and Secretary and Treasurer was Mr Keighley and the number of members on the roll was 79.

Addingham Memorial Pavillion and Bowling Green



The War Memorial was completed slightly later and unveiled before a large gathering on 13th November 1921 with Mr G W Douglas presiding. It now bears the names of all those from Addingham who gave their lives during both

World Wars. Further funds amounting to £1000 were raised through donations to proceed with John Proctor's scheme and in 1926 a large notice board was placed at the entrance to Manor Close advertising the fact that the completed park area incorporating a Bowling Green, Tennis Courts, Putting Green and children's play area was for the people of the village to enjoy.

After WW2 the game was becoming far more inclusive. Ladies from the village were now active members of the Bowling Club and a group of ladies from Ilkley were paying for the privilege of using our village Green. In the ensuing years the Green has been re-layed on several occasions and remains one of the best playing surfaces in the area but not without its challenges!

Addingham Bowling Club has always enjoyed a close relationship with the Parish Council who retain responsibility for maintaining the fabric of the Pavilion whilst the Bowling Club takes responsibility for the maintenance and upkeep of the Green. The annual membership fees paid by the playing members cover the full cost of the contract with Bradford MDC for that purpose.

This year, to celebrate the legacy of the Bowling Club founders who encouraged Addingham villagers to enjoy the game of bowls, **'Social Bowling' sessions for members and non-members alike will be arranged after Easter. Details of dates and times will be posted on the Parish Council Facebook page:** Addingham Quack.

Memorial Close now includes a Pétanque terrain and activity areas extending up to the safe enclosed play area for children and skate park. The entrance gates to the Memorial Pavilion on Main Street, presented by Cllr. James Garforth, bear three Vavasour fess dancetty crests with the words **'Pro Bono Publico'** inscribed beneath.

Acknowledgments:

Henry Czajkowski (1949 – 2019) former Chairman of Addingham Bowling Club for his earlier research. Wendy Green, Addingham Hub Administrator and Assistant to the Clerk, for her enthusiasm and invaluable guidance accessing Parish Council records.

Addingham Parish Council

About our Parish Council Many residents see Parish Councillors out and about in the village or read updates in this newsletter, but you may wonder exactly what the Parish Council does and how it fits in with Bradford Metropolitan District Council.

What is the Parish Council Responsible For?

Addingham Parish Council is the first tier of local government and works specifically for the people of our village. Our role is to represent the community, improve local facilities and help ensure Addingham remains a great place to live. We focus on local priorities and practical improvements that directly benefit the community.

We are responsible for:

- Maintaining and improving certain village assets, including the Pavilion, playing fields, the MUGA, benches and some green spaces.
- Supporting and organising community initiatives and events.
- Commenting on planning applications affecting the parish.
- Helping shape local planning policy through the Neighbourhood Plan.
- Working with local groups and organisations for the benefit of the village.
- Raising a small local precept (part of your Council Tax) to fund parish services and improvements.

What Does Bradford Metropolitan District Council Do?

Bradford Metropolitan District Council is our Principal Authority and is responsible for delivering larger-scale services across the district. While the Parish Council can raise concerns and advocate on behalf of residents, these services are delivered and managed by Bradford Council.

These include:

- Waste collection and recycling
- Highways and road maintenance
- Street lighting
- Planning decisions
- Education and social services
- Housing and environmental health

What Do Addingham Parish Councillors Do?

Your Parish Councillors are local residents who care about Addingham and want to contribute positively to village life. Importantly, Parish Councillors are unpaid volunteers! They give their time freely, alongside jobs, families and other commitments, simply because they want to support and improve our community.

On everyone's behalf they

- Attend regular council meetings
- Review planning applications
- Help manage projects and improvements
- Work with community groups
- Respond to residents' queries and concerns
- Represent the village at meetings with other authorities

The Hub has details of all your Councillors. If you ever have a question, suggestion or concern, please do speak to one of us or contact us via the clerk — we are here to represent you and our village.

clerk@addingham-pc.gov.uk

What's On

Groups holding weekly or bi-monthly meetings are indicated * and listed upfront, once. Other activities are individually listed. For further details of all events/meetings please use the Groups contact details on 31 and 32

April * = regular meetings		
1	Addingham Good Neighbours. Coffee & Cake & Pilates for Seniors (*every Weds)	Memorial Hall 9.45am – 12.30pm
2	Probus (*first Thursdays) “Magical Monaco” Graham Reed	Memorial Hall 10am-Noon
2	Coffee Pot (*every Thurs)	Mount Hermon 10-11.30am
2	Healing Service (*first Thursdays)	St Peters 7pm
4	The Saplings	The Hub 10am- 12pm
5	Children’s Church at St Peters (*every Sunday)	St Peters 10am
5	Food Bank Collection (*first Sundays)	St Peters 10am
6	Addingham Good Neighbours Craft Shed (*every Monday)	Scout Pavilion 10am - Noon
6	Little Blossoms. Babies & Toddlers. Followed by Rainbow Tots (*every Monday)	St Peters Hall 9.30 -11am & 11 -11.30am
6	Addingham Friendship Group (formerly Wednesday Club) (*first & third Mondays)	St Peters Hall 2.30pm
6	WI Craft & Chat (*Mondays, except last of month)	The Hub 1.30pm -4pm
6	Bereavement Group (*first & third Mondays)	The Hub 7pm
6	Addingham Singers (*every Monday)	Mount Hermon 8 -9.30pm
7	Addingham NHS Walking Group (*every Tuesday)	Meet at War Memorial 10am
9	Addingham Good Neighbours IT HELP (*twice monthly)	Memorial Hall 10am -11am
9	Pop up Re-fill stall & Coffee Pot (monthly)	Mount Hermon 10 -11.30pm
9	Dementia Café (*second & fourth Thursdays)	Addingham Cricket Club 11am
10	Cinema Club Film Night...Alan Bennetts “The Choral”	Memorial Hall 7.30pm
11	Allotment & Gardens Spring Show	Memorial Hall 10am - Noon
13	Home Instead Companionship Café (*every second Monday)	Memorial Hall 2pm - 4pm
16	Civic Society Members Meeting- Architecture of the Village – Malcolm Birdsall	Memorial Hall 7.30pm
18	Civic Society Spring Fair	Memorial Hall 10am-Noon
19	Addingham Ceilidh Club (*third Sundays)	Memorial Hall 7.30 -9.30pm
20	Addingham Friendship Group (formerly Wednesday Club) (* first & third Mondays)	St Peters Hall 2.30pm
23	Dementia Café (*second & fourth Thursdays)	Addingham Cricket Club 11am
25	Coffee Morning (*last Saturdays)	Mount Hermon 10am-11am
27	WI Book Club (*last Mondays)	The Hub 2pm-6pm
28	Knitting & Friendship Group (*last Tuesdays)	Mount Hermon 10am - Noon
30	Addingham Good Neighbours IT HELP	Memorial Hall 10am-11am
30	AAGA – The Kitchen Garden -Joe Lofthouse	Mount Hermon 7.30pm

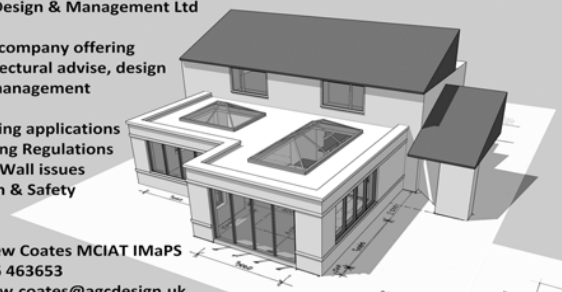
May		
5	Wulfherans (*first Tuesdays) - Beamsley Project	St Peters Hall 7.30pm
7	Polling Day	Memorial Hall 7am - 10pm
8	Cinema Club Film Night . . . see poster	Memorial Hall 7.30pm
9	The Saplings	The Hub 10am - 12pm
9	AAGA Coffee Morning & Plant Sale/Swap	Mount Hermon 10am - Noon
14	Probus – The German Connection. Susan Broadhead	Memorial Hall 10am - Noon
14	Pop up Re-fill stall & Coffee Pot	Mount Hermon 10 - 11.30am
14	Civic Society's members meeting – Holiday by Rail - Richard Walton	Memorial Hall 7.30pm
17	Addingham Ceilidh Club	Memorial Hall 7.30pm
28	Addingham Good Neighbours IT HELP	Memorial Hall 10am - 11am
28	AAGA Trees/Shrubs for the smaller garden - Michael Myers	Mount Hermon 7.30pm
30	Good Morning	Mount Hermon 10am - 11am
June		
2	Wulfherans – Woodland Trust	St Peters Hall 7.30pm
4	Probus – Boston Spa-from Hamlet to Georgian Spa. Lesley Newman	Memorial Hall 10am - Noon
6	The Saplings	The Hub 10am - 12pm
11	Pop up Re-fill stall & Coffee Pot	Mount Hermon 10 - 11.30am
16	Addingham Medical Centre -Patient Participation Group	Memorial Hall
18	Civic Society Members meeting – William Morris & The Arts and Crafts Movement – John Blewitt	Memorial Hall 7.30pm
21	Addingham Ceilidh Club	Memorial Hall 7.30pm
25	AAGA Heroes and Villains of the Plant World - Jo Manfredi-Hamer	Mount Hermon 7.30pm
25	Addingham Good Neighbours IT HELP	Memorial Hall 10am - 11am
27	Coffee Morning	Mount Hermon 10am - 11am
July		
2	Probus – 20 amusing years of Sale & Marketing. Tim Forman	Memorial Hall 10am - Noon
4	The Saplings	The Hub 10am - 12pm
7	Wulfherans – Afternoon Tea	St Peters Hall
9	Pop up Re-fill stall & Coffee Pot	Mount Hermon 10 - 11.30am
9	Addingham Good Neighbours IT HELP	Memorial Hall 10am - 11am
16	Civic Society Members Meeting – Leeds Playhouse – Dave Stannard	Memorial Hall 7.30pm
19	Addingham Ceilidh Club	Memorial Hall 7.30pm
23	Addingham Good Neighbours IT HELP	Memorial Hall 10am - 11am
25	Coffee Morning	Mount Hermon 10am - 11am
TBA	AAGA Members Garden Visit	Venue tbc.

August		
4	Wulfherans – Summer Buffet	St Peters Hall
5	Allotment & Gardens entries for Annual show	Memorial Hall 6pm -8pm
6	Probus – In and out at the Top “Britains highest Pub” Neil Hanson	Memorial Hall 10am -Noon
8	Allotment & Gardens Annual Village Summer Show	Memorial Hall 2pm - 4pm
14	Civic Society Summer Special	Memorial Hall 7.30pm
29	Coffee Morning	Mount Hermon 10am - 11am
September		
1	Wulfherans - TBA	St Peters Hall 7.30pm
3	Probus – “The long and winding road” The story of the Beatles. Alun Pugh	Memorial Hall 10am - Noon
5	The Saplings	The Hub 10am - 12pm
10	Addingham Good Neighbours IT HELP	Memorial Hall 10am - 11am
11	Cinema Clubs Film Night.....see poster	Memorial Hall 7.30pm
17	Civic Society Members Meeting – Astrology versus Astronomy – Martin Lunn	Memorial Hall 7.30pm
20	Addingham Ceilidh Club	Memorial Hall 7.30pm
24	Addingham Good Neighbours IT HELP	Memorial Hall 10am - 11am
24	AAGA -Autumn and Winter Planting/Prepping – John Foley - Holden Clough	Mount Hermon 7.30pm
26	Coffee Morning	Mount Hermon 10am - 11am

AGC Design & Management Ltd

Local company offering architectural advise, design and management

Planning applications
Building Regulations
Party Wall issues
Health & Safety



Andrew Coates MCIAT IMaPS
07986 463653
andrew.coates@agcdesign.uk



THE LORD ADDINGHAM

A friendly welcome awaits from Liam & his team.


OPEN DAILY UNTIL 11PM
FOOD MENU SERVED UNTIL 9PM

DELICIOUS HAND ROLLED ITALIAN SOURDOUGH PIZZAS



SUNNY REAR GARDEN TERRACE!

Main Street, Addingham, Ilkley, LS29 OPD. team@thela.uk 07394 817055






• HAIR CUT • BEARD TRIM
• NOSE & EAR WAX
• SKIN FADE
• FREE HOT & COLD DRINKS

OPENING TIMES
TUES-SAT 9:30 AM-6 PM
SUNDAY 10 AM-4 PM

Mob: 07354 943753

96 Main Street, Addingham LS29 ONS

  Addingham Barbers

Addingham  Barbers

Local businesses and services

Addingham Cricket Club - welcomes you on matchdays between April and September. Quality cricket, bar and food. Contact Peter on **07734 331481**

Addingham Newsagents - can deliver daily or weekly to your home! Contact Mark **07359 840166** addinghamnewsagents@gmail.com

Addingham Pre-School - Term time only, ages 2 & over. Full & half days 01943 830450 info@addinghampreschool.org

Addingham Sandwich Shop - 01943 839009 addinghamsandwichshop@gmail.com Mon-Sat 8:30am-3pm. Delicious Hot & Cold Food, Cakes, Drinks & Groceries too! Event catering available.

All Around Cleaning & Gutter Services - Call Oli on **07739 396 135** Window Cleaning, Gutters, Facias & Soffits, House Cleaning. Local reliable service.

Cutting Line Unisex Hair Salon - 98 Main Street **07974 705225**

David C Thompson - Painter & Decorator Dedicated to High Quality Workmanship. **01943 830392 / 07940 354160**

DGL - Suppliers and installers of quality windows and doors **01943 830379** dglilkley@outlook.com www.dgl-ilkley.co.uk

H & J Adams - Hardware, Gifts & Garden Sundries. 141 Main Street **01943 830257**

Joe Tetley - All Aspects of Joinery. No job too small. joe.tetley@gmail.com **07969 458057**

Lime Kiln - Quality Hand Made Furniture, Bespoke Kitchens - Townhead Trading Estate **01943 830099** www.limekilnfurniture.com

Lucy Hartley Accountancy **07754 949881** lucy@lucyhartleyaccountancy.co.uk www.lucyhartleyaccountancy.co.uk

Robert Neilson School of Motoring **07903 326390 / 01943 839780**

RJP Services - General Property Repairs and Handyman. Call Richard on **07703 476392**

Rowlands Pharmacy - Advice on all minor ailments and we can collect your prescriptions from local GP Surgeries - **01943 831462** www.rowlandsparmacy.co.uk

Spice Fusion Takeaway **01943 830864** Open Tues to Sun 5.30pm til late myspicefusionaddingham.co.uk

Stephen Gill Plumbing Services Small plumbing jobs & repairs. Taps & toilet replacements **07850 318300. 01943 831364**

Sue Ross Art - Art classes. **01943 831093 or 07962 187533** or email her at susanroxanne@hotmail.com for details.

Sue Ross Fitness - Exercise to music. Ring Sue on **07962 187533** or email her at susanroxanne@hotmail.com for details.

Wharfedale Kennels & Cattery - Plus Grooming & Microchipping, Addingham Moorside. **01943 831892**

A big thankyou to all our businesses & services. Their adverts appear on this page and throughout!

All Around Cleaning & Gutters - Addingham Barbers - Addingham Medical Centre - AGC Design & Management Ltd. - Addingham Social Club Balloon World - Can Do Tuition - Claire Wareham Hair - DGL - Fusion Chocolates - Emma Timms Fuzzy's - Geraldine Thompson - Great Yorkshire Hampers - Hadfield Photocraft - John Whitham Funerals - Lucy Hartley Accountancy - Muirhead Dental Health - Period Holiday Cottage - Peter Barton Guitars - Plan It Earth Tile Showroom - Precision Plastic Ball Co. - Soft Play - Steels Coaches - Stewart Stead Decorator - Sue Ross Art - The Lord Addingham - Village Chippy - Town Head Garage

Their financial help is invaluable to us. PLEASE SUPPORT OUR SUPPORTERS!

Voluntary Organisations, Groups & Clubs

Addingham Allotments and Gardens Association (AAGA)

Stewart Taylor **07769 975216**
 info@addinghamaga.org.uk
 www.addinghamaga.org.uk

Addingham Anglers - Peter Bell
 pbaaa@btinternet.com
 www.addinghamfishing.org

Addingham Civic Society -
 Gill Battarbee **01943 839792**
 chairman@addinghamcivicsociety.co.uk
 www.addinghamcivicsociety.org.uk

Addingham Environment Group -
 Rick Battarbee **01943 839792**
 aeg@addingham.info
 www.addinghamenvironmentgroup.org.uk

Addingham F.C. -
 Jake Parkinson
 jake@footballkit.co.uk

Addingham Friendship Group -
 Margaret Norris **01943 830935**
 m-norris@hotmail.co.uk

Addingham Garden Friends -
 fkwaltonaddingham@gmail.com

Addingham Good Neighbours -
 Diana Keeble **01943 839425**
 addinghamgninfo@gmail.com

Addingham Pre-School
01943 830450 info@
 addinghampreschool.org

Beer Festival - Richard Hunter Rowe
 beer@addinghambeerfest.co.uk
 www.addinghambeerfest.co.uk

Bowling Club - Barry Fielding **07905 361456**
 barryfielding1@yahoo.co.uk
 www.addinghambowlingclub.com

Beavers, Cubs, Scouts & Explorers -
 Lisa Nutton **07779 300528**
 addingham@wharfedalescouts.org.uk

Brownies - Phoebe Kidd and Stefanie
 Whitaker
07814 625042
 addinghambrownies@gmail.com

Ceilidh Club liz.ilkeley@btinternet.com
 addinghamceilidhclub.org.uk

Camera Club - Ilkleycameraclub.org.uk

Climate Action Addingham -
 Rick Battarbee **01943 839792**
 r.battarbee@ucl.ac.uk
 climateactionaddingham.info

Cricket Club adult players -
 Peter Etchells **07734 331481**
 peteretchells06@gmail.com

Cricket Club Junior players -
 Richard Hannam **07803 159640**
 Richie_ah@hotmail.co.uk

Cycling
 addinghamcycleroutes.co.uk

Drama Group - David Tomlinson
07960 970087
 addinghamdramagroup@outlook.com

Film Club - Dawn Brady
 dawn.brady15@gmail.com

First Responders - Emma Turner
07811 203036
 addinghamcfr@gmail.com

Gala Committee -
 Richard Hunter Rowe **07876 478380**
 Richard.HunterRowe@gmail.com

Guides - Natasha Harrison
01943 839637
 1staddinghamguides@gmail.com

Voluntary Organisations, Groups & Clubs

Heritage Group - Ian Cameron
chairman.addinghamheritagegroup@gmail.com
www.addinghamcivicsociety.org.uk

Hub - Wendy Green **01943 831758**
admin@addingham-pc.gov.uk
www.addingham-pc.gov.uk

Library - Carol Hindle
addinghamcommunitylibrary@live.co.uk

Little Blossoms Babies & Toddlers
Hayley & Stacy **07837 178094**
littleblossomssoftplay@gmail.com

Lower Wharfedale Ramblers -
lowerwharfedaleramblers.co.uk

Methodist Church - Rev Shannon Delaureal
01943 430345
shannon.delaureal@methodist.org.uk

Memorial Hall - Wendy Green
wendygreen21@gmail.com

Mount Hermon - Jan Potter
07954 992867 janpotter45@gmail.com

Netball -
www.facebook.com/addinghamnetball

Addingham Panto Group - **07771 531060**
addinghampantomimegroup@gmail.com

Probus - Steve Crossley-Smith
01943 830640
crossleysmith@btinternet.com

Rainbows - **01943 839068**
Eleanor Turner & Emma Turner
First_Addingham_Rainbows@outlook.com

Roman Catholic Church -
Fr. T Swinglehurst **01943 863179**
office.ssfishermore@dioceseofleeds.org.uk

Rounders - Dingham Dashers - Lucy Hall
07904 345480 lucyh955@gmail.com

Storytime@The Library **01943 831758**

St Peter's Church -
Rev Mark Cannon **07866 298 892**
The Office **01943 830306**
markc.stpeters@gmail.com
contact@stpetersaddingham.org.uk

Table Tennis - Tony Richardson
155chantonia@gmail.com

The Addingham Singers -
Bek Olive 07729 191379
addinghamsingers@gmail.com

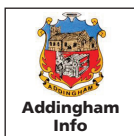
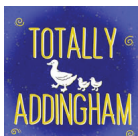
Totally Locally
tladdingham@gmail.com

Women's Institute - Lorinda Robinson
07711 567558
lorinda.robinson@outlook.com

Wulfherans - **01943 830306**
contact@stpetersaddingham.org.uk

Youth Centre - Lisle Richardson
lr@richardsonelectrical.co.uk

email: clerk@addingham-pc.gov.uk or chairman@addinghamcivicsociety.co.uk
Ring Hub clerk: 01943 831758 or drop into The Hub
Mon - Thurs 9.00 - 12.00 Fri 13.45 - 16.45



There are 4 Facebook pages with local news and updates.